

ALIXA Product Catalog

# METAL STAMPING PRODUCTS



**STUD GUARDS - MENDING PLATE - STUD SHOES - ACCESSORIES**

 [sales.india@alixaexpo.com](mailto:sales.india@alixaexpo.com)

 Message ALIXA INEXPO LLP on WhatsApp. + 91 8849 52 5405

# ENGINEERED Product & Contract Custom Manufacturing

ALIXA INEXPO LLP is a Rajkot - Gujarat - INDIA based company working towards excellence in the manufacturing as well as merchant trading and believes in pursuing business through innovation and technology.

We are a full service custom manufacture that specializes in metal stamping for the plumbing and solar industries. Our mission is to provide our customers with exceptional customer service and quality product that ships on-time!

## Category

**BOCA Plates**

**Metal Plumbers Tape**

**Stud Guards**

**Duct Hanger**

**FHA Nail Plates**

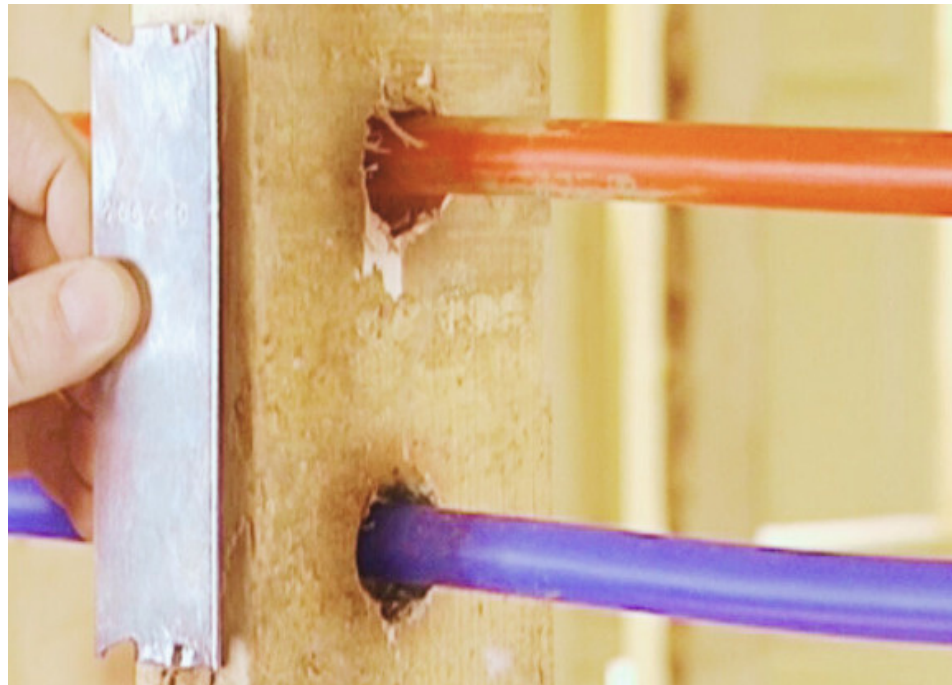
**Duct Strap**

**Stud Shoes**

**Pipe Straps**

**Pipe Hooks**

**Plastic Clamps**



### Additional Services

After Fab Hot Dipped Galvanized  
Pre Fab Hot Dipped Galvanized  
Zinc Plating  
Heat Treating  
Laser Cutting  
Powder Coating

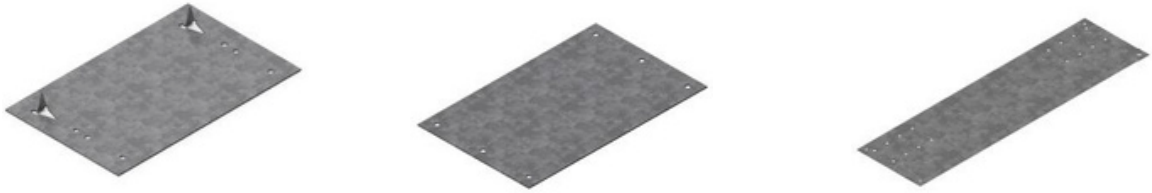
Special Packaging  
Private Label if required  
Poly bagging Packing  
UPC Barcod Marking  
Custome Label Design

### Note:

- Contact non-stock sizes and hole patterns
- Special sizes & packaging available
- Request base we can provide contractor packs
- Bar Coding available upon request additional charges will apply
- For Installation additional screws and plastic anchor kit are available as per order

## BOCA Plates

- Boca Plates commonly known as protective plates or nail plates
- Used on the top and bottom of the wall to avoid penetration of fasteners into wiring or piping
- Used for cold formed steel stud construction using proper fasteners
- Premium galvanized available for additional corrosion resistance for use with pre treated lumber
- Reinforce top plate available for DWV or air duct Installation
- Self nailing feature promises fast and hands free Installation
- BOCA plates are used to meet the protective requirements of the building code



<b>Dimension</b>	5" X 6" , 5" X 8" , 5" X 16" , 5" X 18 "
<b>Gauge</b>	16 GA
<b>Pattern</b>	Hole Pattern Placement as per code
<b>Material</b>	Galvanized

Note: Custom Manufacturing facility available as per design

## Metal Plumbers Tape

- Tape commonly known as metal plumber's tape or metal strapping
- Metal plumber tape used for hanging or securing any type ductwork, tubing of pipe

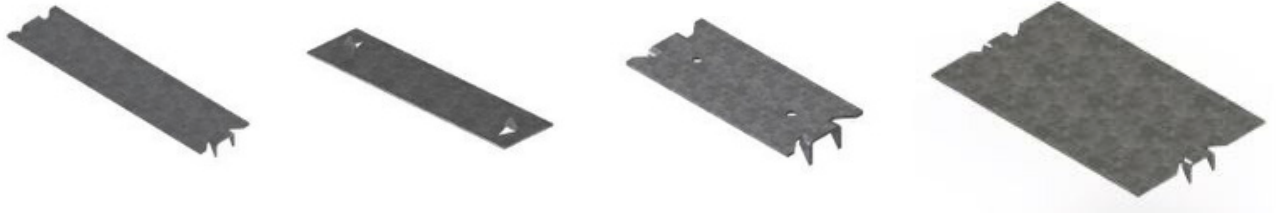


<b>Dimension</b>	3/4" X 10', 3/4' X 25', 3/4" X 50', 3/4" X 100'
<b>Gauge</b>	18 GA
<b>Pattern</b>	Hole Pattern Placement as per code
<b>Material</b>	Galvanized steel, Stainless steel, Copper coated, Plastic Polypropylene

Note: Custom Manufacturing facility available as per design

## Stud Guards

- Stud guards used to provide protection from fasteners penetrating into piping and wiring used with pex applications
- Self nailing end prongs and Interlocking available
- No additional nails or screws are required to Install stud guards
- Self nailing center set end prongs make for an easy Installation



<b>Dimension</b>	1-1/2" X 1-1/2", 1-1/2" X 2-3/4", 1-1/2" X 3", 1-1/2" X 5", 1-1/2" X 6", 1-1/2" X 9", 1-1/2" X 12", 1-1/2" X 18", 1-1/2" X 24" 2" X 5", 2" X 6" 3" X 3", 3" X 5", 3" X 6", 3" X 9", 3" X 12", 3" X 18", 3" X 24" 3-1/2" X 5", 3-1/2" X 6" 5" X 6", 5" X 8", 5" X 18" 6" X 5", 6" X 6", 6" X 8", 6" X 12", 6" X 18"
<b>Gauge</b>	16, 18, 20, 22 GA
<b>Pattern</b>	Hole Pattern Placement as per code
<b>Material</b>	Galvanized

Note: Custom Manufacturing facility available as per design

## Duct Hanger

- Duct hanger used to hang hot air supply and cold air returns to framing

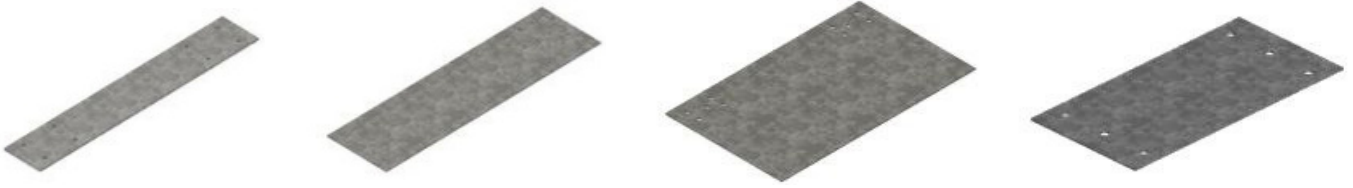


<b>Dimension</b>	7/8" X 8", 7/8" X 9", 7/8" X 10"
<b>GA</b>	18 GA
<b>Pattern</b>	Hole Pattern Placement as per code
<b>Material</b>	Galvanized

Note: Custom Manufacturing facility available as per design

## FHA Nail Plates

- FHA nail plates commonly known as safety plates or nail plates
- Nail plates used to reinforce floor or ceiling joints that have been cut for pipes passing through a stud area



<b>Dimension</b>	1-1/2" X 3", 1-1/2" X 6", 1-1/2" X 9", 1-1/2" X 12", 1-1/2" X 16", 1-1/2" X 18", 1-1/2" X 24" 3" X 6", 3" X 9", 3" X 12", 3" X 18", 3" X 24" 3-1/2" X 6", 3-1/2" X 9", 3-1/2" X 12", 3-1/2" X 18", 3-1/2" X 24" 5" X 6", 5" X 9", 5" X 12", 5" X 16", 5" X 18", 5" X 24" 10" X 6", 10" X 9", 10" X 12", 10" X 16", 10" X 18", 10" X 24"
<b>Gauge</b>	16, 18, 20 GA
<b>Pattern</b>	Hole Pattern Placement as per code
<b>Material</b>	Galvanized

Note: Custom Manufacturing facility available as per design

## Duct Strap

- Duct strap used for hanging or securing any type of ductwork, tubing or piping system

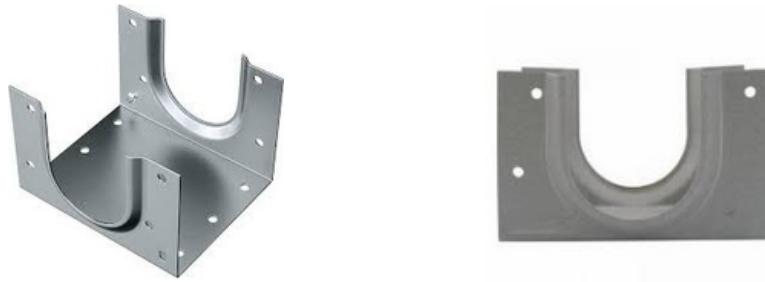


<b>Dimension</b>	1" X 10', 1" X 100' 1-1/2" X 10', 1-1/2" X 100'
<b>Gauge</b>	20, 22, 24, 26, 30 GA
<b>Pattern</b>	Hole Pattern Placement as per code
<b>Material</b>	Galvanized, Stainless steel

Note: Custom Manufacturing facility available as per design

## Stud Shoes

- Stud shoes used to provide protection from fasteners penetrating into piping
- Self-nailing end prongs are interlocking to use with pex



<b>Dimension</b>	Single, Double, Triple Stud Shoe
<b>Gauge</b>	16, 18 GA
<b>Pattern</b>	Hole Pattern Placement as per code
<b>Material</b>	Galvanized

Note: Custom Manufacturing facility available as per design

## Pipe Straps

- Pipe strap used for securing pipe in light and heavy duty work
- Protective piping around fitting to ensure against excessive vibration
- Strap used to anchor piping securely to floor or framing member



<b>Dimension</b>	1/2", 1", 1-1/2", 1-1/4", 2-1/2", 2", 3/4", 3/8", 3", 4"
<b>Gauge</b>	3, 10, 14, 16, 20, 22, 24, GA
<b>Pattern</b>	1 Hole, 2 Hole
<b>Material</b>	Galvanized, Stainless steel, Plain steel, Copper coated steel, Zinc plated

Note: Custom Manufacturing facility available as per design

## Pipe Hooks

- Pipe hook used for securing copper pipe in light applications
- Protective piping around fitting to ensure against excessive vibration



<b>Dimension</b>	1-1/2" X 2-1/2", 6' 1-1/4" X 6" 1" X 6" 3/4" X 2-1/2", 6'
<b>Gauge</b>	9, 11 GA
<b>Pattern</b>	Pattern Placement as per code
<b>Material</b>	Plain steel, Copper coated steel, Plastic coated steel

Note: Custom Manufacturing facility available as per design

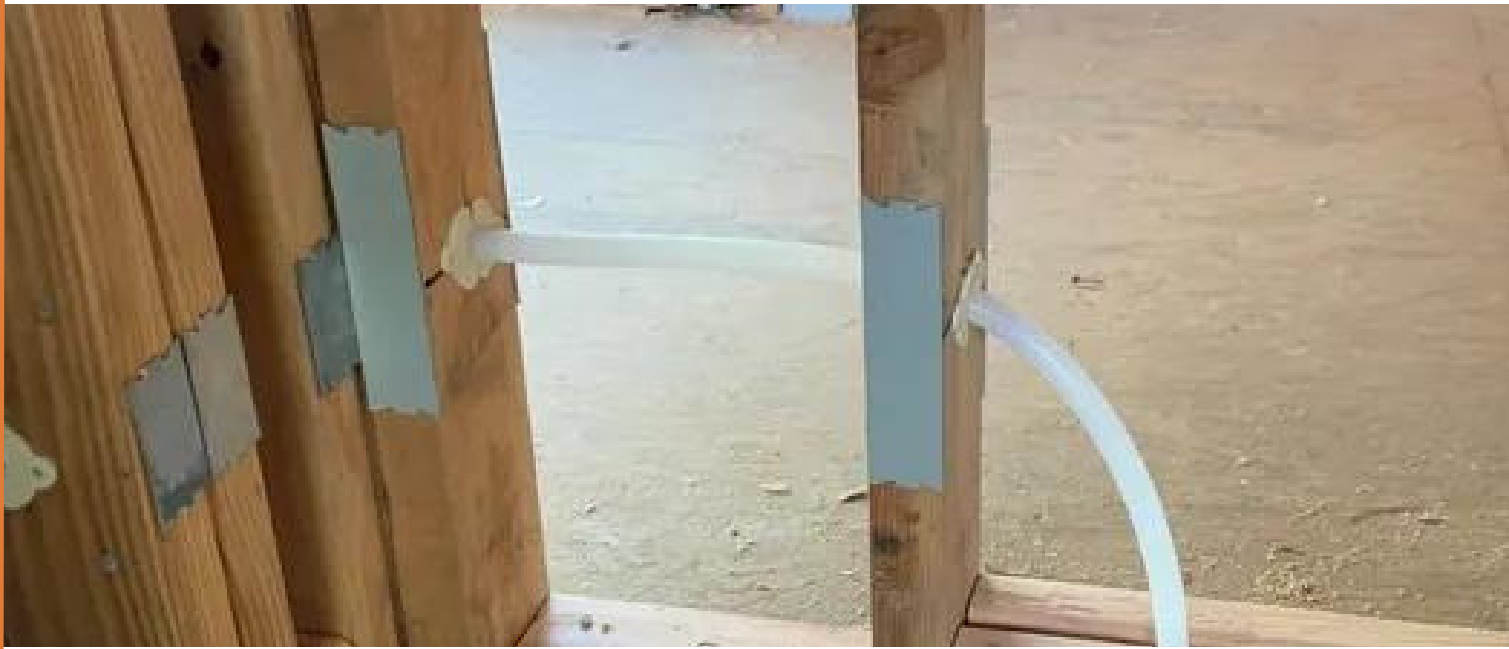
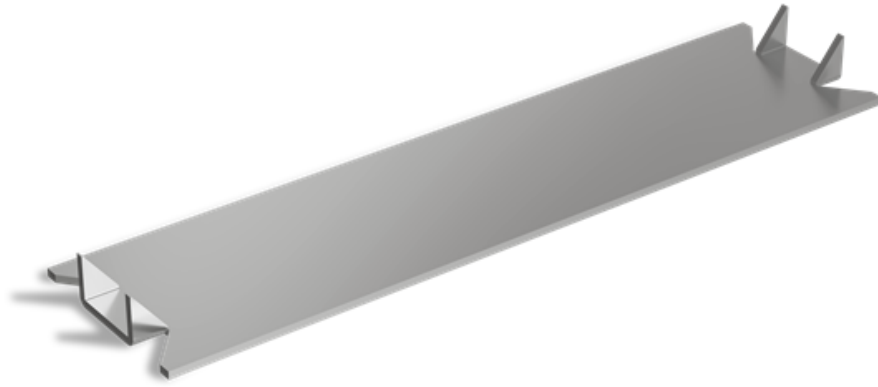
## Plastic Clamps

- Plastic clamp used to reduce vibration on piping
- Made with high impact plastic and absorbs pipe vibrations
- Fast and easy use allows for tube contraction and expansion
- Protect noise due to pipe contraction and expansion
- Ideal for CPVC tubing from wood in long durability and support
- Includes pre-loaded nail system



<b>Dimension</b>	1-1/2", 1-1/4", 1/2", 1", 2", 3/4", 3/8"
<b>Pattern</b>	Half, Full, 2 Hole Clamp
<b>Material</b>	Polyethylene

Note: Custom Manufacturing facility available as per design



📍 Ramnath, Street No.2, Lohanagar, Near Umiya Steel, Gondal Road, Rajkot 360 002. Gujarat - INDIA

📞 Message ALIXA INEXPO LLP on WhatsApp. + 91 8849 52 5405

✉ sales.india@alixaexpo.com | alixaexpo@gmail.com

🌐 www.alixaexpo.com



/alixainexpollp